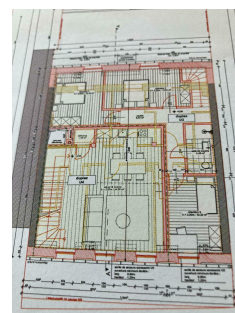
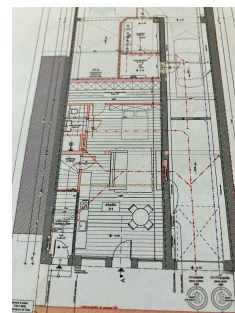


## House to renovate

275m<sup>2</sup> 6 Bedroom(s)  
ECHTERNACH

**785 000€**



### DESCRIPTION

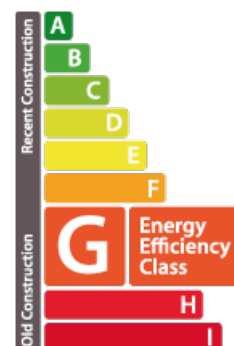
all inquiries should be made by email to [rbi@pt.lu](mailto:rbi@pt.lu) please ECHTERNACH-CENTRE interesting for private individuals and developers/investors 275sqm building plus 175sqm garage/warehouse!!!! in need of renovation, but with authorization to create 4 apartments (2 studios and 2 duplexes with 3 bedrooms) for a net living area of 289sqm and 6 parking spaces (2 double and 2 single), plus, given the height of the garage/storage area, the possibility of creating an office mezzanine of 110sqm!!! possible profit for developer minimum 600,000€ or even more may also be of interest to small businesses, such as heating engineers, electricians, builders, architects, engineering offices with residential units slots of potential (we have customers for the purchase of apartments!!) concrete slab on ground floor, the remainder can be built using timber frame construction, which is 120,000€ less expensive than traditional construction and takes only 8 months to complete possible rental income of 7,000€ or more per month...

### CHARACTERISTICS

Number of pieces : 15  
Nb. chamber (s) : 6  
Area : 275m<sup>2</sup>  
Nb. of bathrooms : -  
Equipped kitchen : Non

### ENERGY PASS

#### Energy class



#### CO2 emissions Class



✓ **RBI Luxembourg S.A**

📍 **B.P 6 L-5501**

☎ **+352-346520**

✉ **[rbi@pt.lu](mailto:rbi@pt.lu)**

🌐 **<https://www.rbi.lu/en/detail-2449727>**